

Hopper design and configuration based on application.

# OPTI 280 SPECIFICATIONS

## VACUUM STUFFING & PUMPING SYSTEM

The OPTI 280 is a twin-piston, PLC-controlled pump designed for precise and continuous transfer of various products. Its hydraulic system drives alternating piston strokes to maintain consistent pressure or flow, with the ability to stall against product when downstream equipment stops. Individually regulated sleeves and pistons ensure reliable performance, and multiple hopper options support efficient product feeding and air removal.

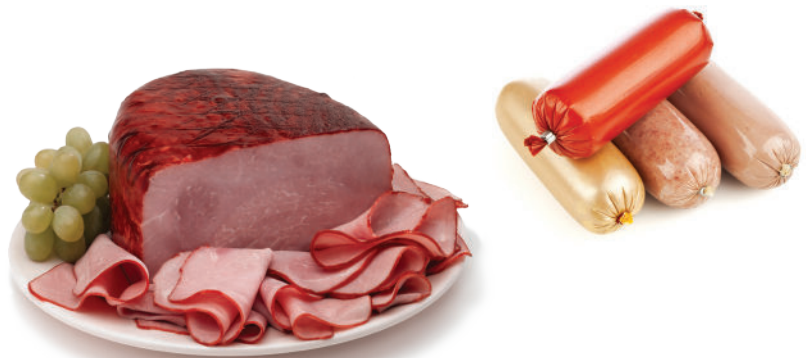


## FEATURES

- HIGHEST VACUUM LEVEL IN THE INDUSTRY (<4 TORR) FOR MAXIMUM REMOVAL OF ENTRAPPED AIR
- PRODUCT THROUGHPUT UP TO 28,000 LBS (12,701 KG) PER HOUR AT 430 PSI
- SELECTABLE MODES OF OPERATION: CONSTANT PRESSURE OR SPEED CONTROL (SURGE FREE CONTINUOUS FLOW), BOTH RESULTING IN SUPERIOR PORTION ACCURACY
- BEST-IN-CLASS "CUSTOMER INSPIRED" HYGIENIC DESIGN
- FEATURING NO-LEAK, PATENT PENDING SEALED ELECTRICAL BOX WITH MULTIPLE SANITARY FEATURES
- IMPROVED ERGONOMIC DESIGN FOR QUICK, NO TOOL ASSEMBLY/ DISASSEMBLY AND OPTIMAL OPERATOR SAFETY
- SMART, HIGHLY INTUITIVE ICON BASED HMI, MAKING OPERATION EXTREMELY USER-FRIENDLY FOR MULTI-LINGUAL WORKFORCES
- DESIGNED WITH SIGNIFICANTLY LESS REPLACEMENT AND WEAR PARTS FOR BEST VALUE, INCREASED UPTIME, AND LOWER TOTAL COST OF OWNERSHIP
- PRODUCT GUIDES AVAILABLE IN VARIOUS STYLES TO MATCH APPLICATION NEEDS
- CE VERSION AVAILABLE

## ADVANTAGES

- Automated perfect portioning which eliminates the hand-fill process while maintaining exact portion target weights
- The very best vacuum for higher density stuffing, resulting in great yield improvement
- Optimal results from exemplary high quality output with the very best product appearance



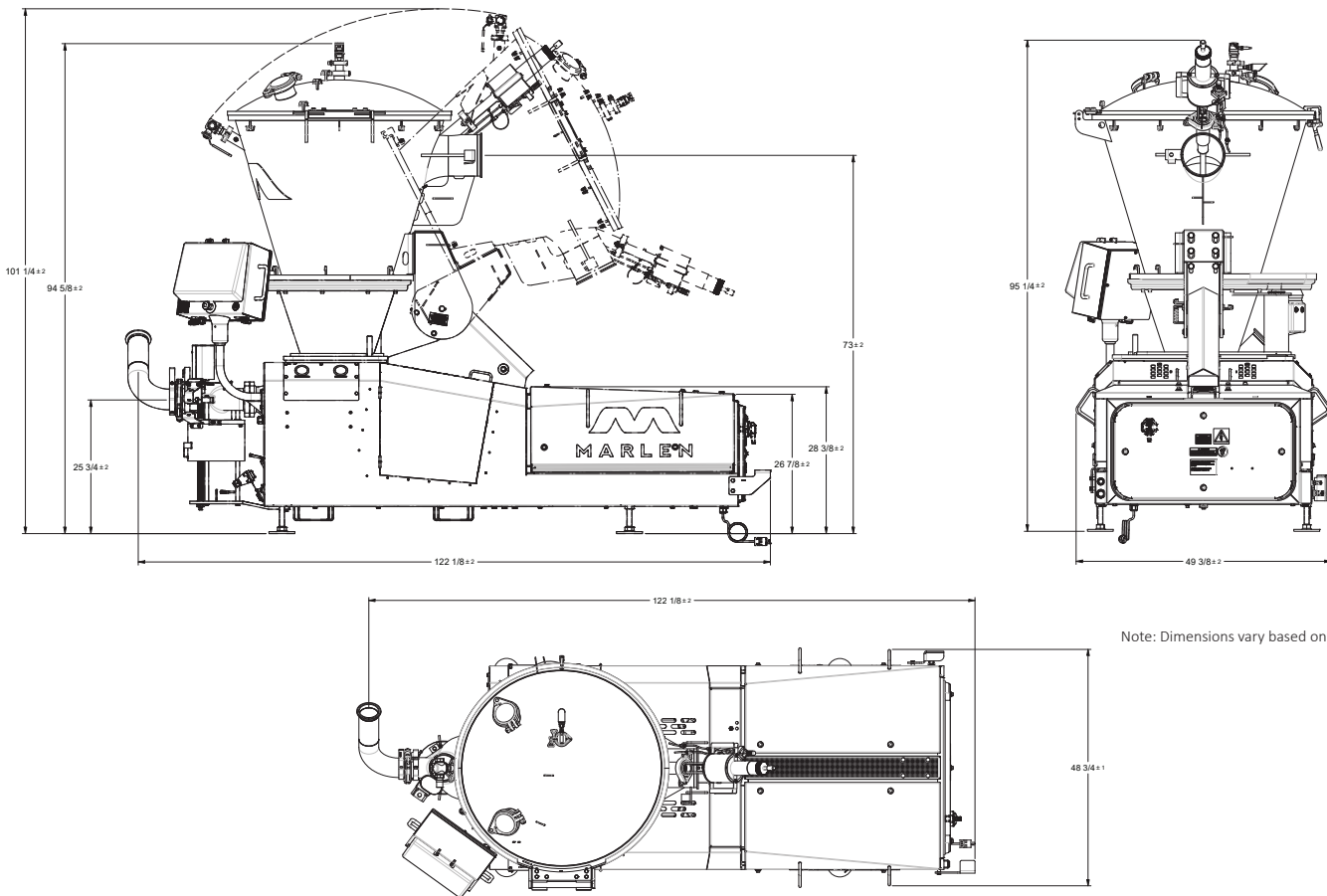
# TECHNICAL SPECIFICATIONS

MODEL	PISTON DIAMETER	PISTON STROKE	MAXIMUM CAPACITY (WT.)	MAXIMUM CAPACITY (VOL.)	PRODUCT OUTLET	MAX PRODUCT PRESSURE	MACHINE WEIGHT
Opti 280	8-9/16" 217 mm	14" 355 mm	28,000 lbs/hr 12,701 kg/hr	55 gpm 208 lpm	4" 102 mm	430 psi 29 BAR	4,000 lbs 1,815 kg

## UTILITY REQUIREMENTS

MODEL	PUMP UTILITIES	AIR REQUIREMENTS
OPTI 280	110 V 60 Amp 1ph	3 CFM at 100psi

## TECHNICAL DRAWINGS



Note: Dimensions vary based on hopper design.



4780 NW 41ST ST, STE. 100 • RIVERSIDE, MO 64150

TEL 913.888.3333 | TOLL FREE 800.862.7536 | FAX 913.888.6440 | EMAIL: SALES@MARLEN.COM | WWW.MARLEN.COM



MARLEN IS A MEMBER OF THE DURAVANT FAMILY OF COMPANIES

FOOD SORTING & HANDLING | PROTEIN PROCESSING | PACKAGING | MATERIAL HANDLING

[www.duravent.com](http://www.duravent.com)