



AFOHEAT™ DUAL-LANE LIQUID SMOKE APPLICATOR

SPECIFICATIONS

STANDARD DESIGN. COMPACT FOOTPRINT. FLEXIBLE OPERATION.

Our Afoheat™ Dual-lane Liquid Smoke Applicator is engineered to complement Marlen's range of surface treatment solutions. Its flexible design has led to installations for a variety of applications including rapid smoking and browning of both bulk and convenience foods. At the core of the design concept are standardized models with a compact footprint and is perfect for processors looking for a liquid applicator technology that is easy to maintain. The control system adjusts the recirculation flow of liquid for a variety of liquid smoke products and other browning agents for optimal results in product color and enhanced flavor profile. Better Process...Better Food®.

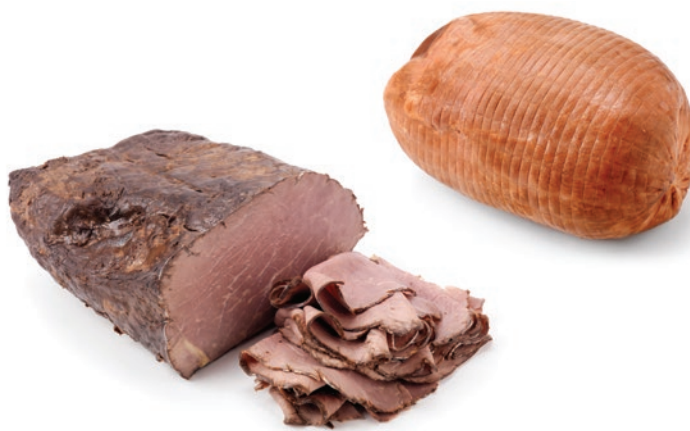
FEATURES

- TWO PRODUCT LANES
- INLINE APPLICATOR FOR RAPID-SMOKE, ROAST, BROWN, OR GRILL PROCESS
- TOP, BOTTOM, AND SIDE APPLICATION WITH SPLASH GUARDS
- SHOWER DRENCH APPLICATOR (NO NOZZLES)
- CLOSED-LOOP RECIRCULATION SYSTEM
- FILTERS ARE EASY TO ACCESS AND REMOVABLE FOR CLEANING
- SIMPLIFIED DESIGN FOR FAST CHANGEOVER AND CLEANING
- ADJUSTABLE PUMP AND CONVEYOR SPEEDS
- LOW-LEVEL INDICATOR ALARM
- MACHINE-MOUNTED PREWIRED CONTROLS
- PREASSEMBLED AND TESTED, INSTALLATION READY

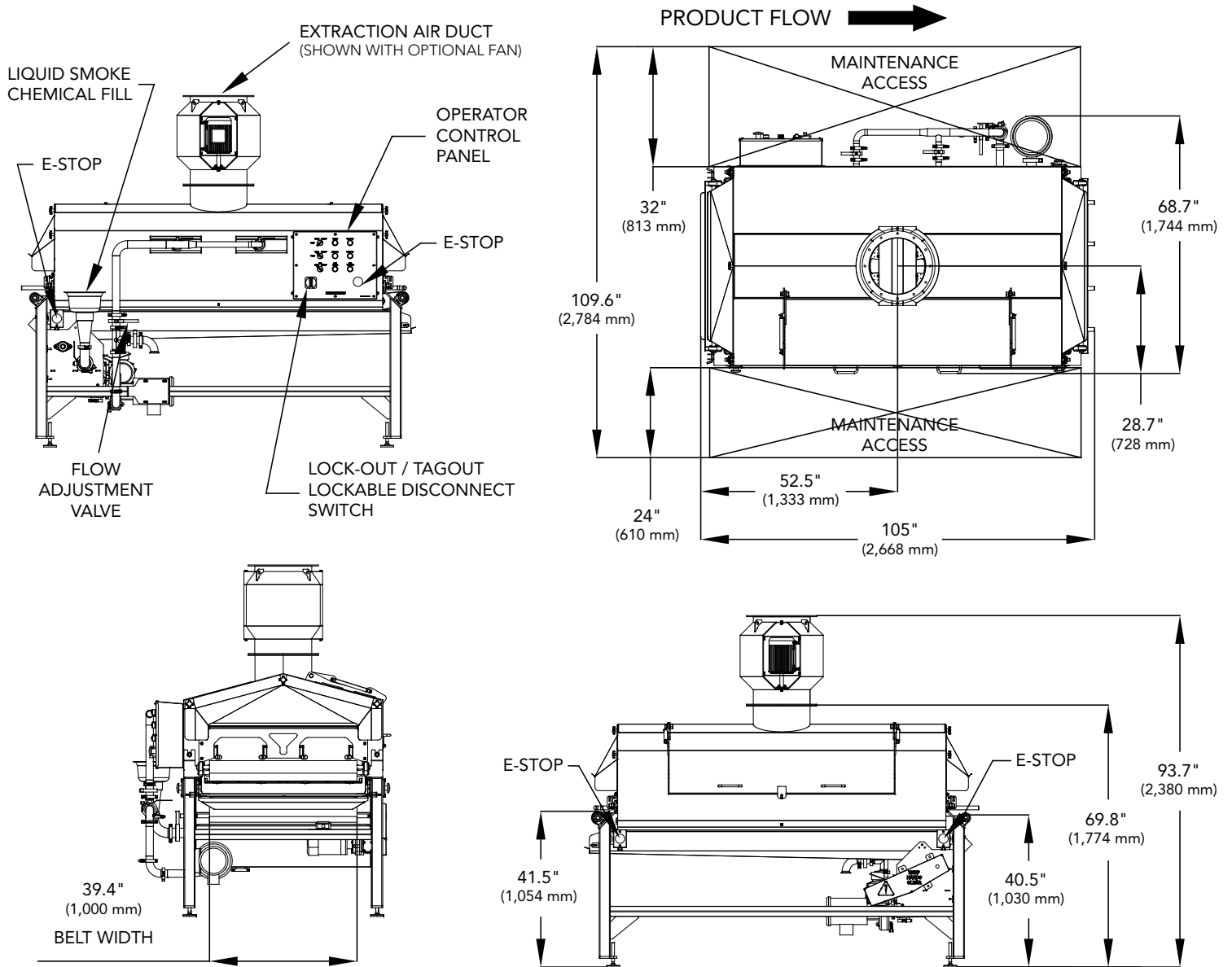
OPTIONAL FEATURES

- AIR KNIFE FOR PRODUCTS WITH CREVICES
- EXTRACTION FAN
- INFEED AND DISCHARGE EXTENSIONS
- UL CONTROL PANEL AND ENCLOSURE
- CE GUARDING

FEATURES	TECHNICAL SPECIFICATIONS
Footprint	8.8' (2.7 m) L x 9' (2.8 m) W x 5.8' (1.8 m) H; Fan height 7.8' (2.38 m)
Conveyor	40" (1,000 mm) W
Conveyor Speed	15-120 seconds average; Up to 65' (20 m) per minute
Product Clearance	Up to 8" (200 mm)
Electrical Supply	USA 480V, 14 Amp, 3 Ph, 60 Hz EUR 380V, 17 Amp, 3 Ph, 50 Hz
Extraction	15" (381mm) Fan (optional) Up to 2,000 CFM (57 m³/min.) total
Drains	2.5" (65 mm) Sanitary – tank 2" (50 mm) Sanitary – pump outlet



TECHNICAL SPECIFICATIONS



4780 NW 41ST ST, STE. 100 • RIVERSIDE, MO 64150

TEL 913.888.3333 | TOLL FREE 800.862.7536 | FAX 913.888.6440 | EMAIL: SALES@MARLEN.COM | WWW.MARLEN.COM



MARLEN INTERNATIONAL IS A MEMBER OF THE **DURAVANT** FAMILY OF COMPANIES

FOOD PROCESSING SOLUTIONS | PACKAGING SOLUTIONS | MATERIAL HANDLING SOLUTIONS | SUPPORTPRO

www.duravant.com