



*Hopper design and configuration based on application.*

## FEATURES

- HIGHEST VACUUM LEVEL IN THE INDUSTRY (<4 TORR) FOR MAXIMUM REMOVAL OF ENTRAPPED AIR
- PRODUCT THROUGHPUT UP TO 34,000 LBS (15,422 KG) PER HOUR AT 125 PSI
- SELECTABLE MODES OF OPERATION: CONSTANT PRESSURE OR SPEED CONTROL (SURGE FREE CONTINUOUS FLOW), BOTH RESULTING IN SUPERIOR PORTION ACCURACY
- ENGINEERED WITH REGENERATIVE SERVO DRIVES FOR MAXIMUM EFFICIENCY AND OVER 40% REDUCTION IN ENERGY OVER HYDRAULIC MODELS
- ENERGY-EFFICIENT AIR COOLED SYSTEM – NO WATER REQUIRED
- BEST-IN-CLASS “CUSTOMER INSPIRED” HYGIENIC DESIGN
- FEATURING NO-LEAK, PATENT PENDING SEALED ELECTRICAL BOX WITH MULTIPLE SANITARY FEATURES
- IMPROVED ERGONOMIC DESIGN FOR QUICK, NO TOOL 3-MINUTE ASSEMBLY/DISASSEMBLY AND OPTIMAL OPERATOR SAFETY
- SMART, HIGHLY INTUITIVE ICON BASED HMI, MAKING OPERATION EXTREMELY USER-FRIENDLY FOR MULTI-LINGUAL WORKFORCES
- DESIGNED WITH SIGNIFICANTLY LESS REPLACEMENT AND WEAR PARTS FOR BEST VALUE, INCREASED UPTIME, AND LOWER TOTAL COST OF OWNERSHIP
- PRODUCT GUIDES AVAILABLE IN VARIOUS STYLES TO MATCH APPLICATION NEEDS
- NEARLY SILENT OPERATION
- CE VERSION AVAILABLE

# OPTISERV 340 SPECIFICATIONS

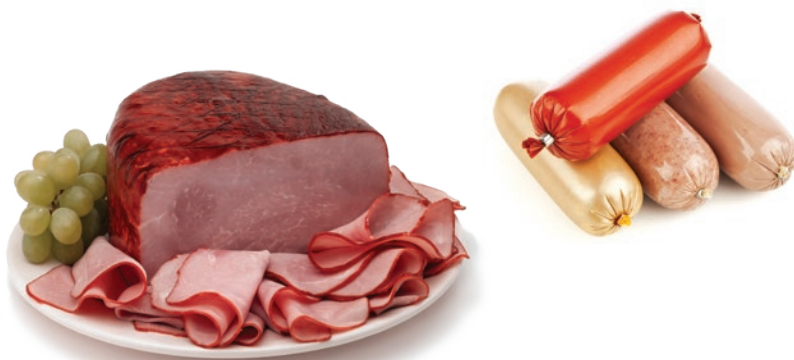
## VACUUM STUFFING & PUMPING SYSTEM

The next generation Marlen vacuum stuffer has arrived. With the pumping process powered entirely by servo motor technology, the new OptiServ series pumps deliver exemplary high quality output while dramatically reducing the complexity and cost of operating at peak performance levels. With the very best final product appearance the industry has come to expect from Marlen, the OptiServ series is designed to lower total cost of ownership and put more money in the bank.



## ADVANTAGES

- Automated perfect portioning which eliminates the hand-fill process while maintaining exact portion target weights
- The very best vacuum for higher density stuffing, resulting in great yield improvement
- Optimal results from exemplary high quality output with the very best product appearance



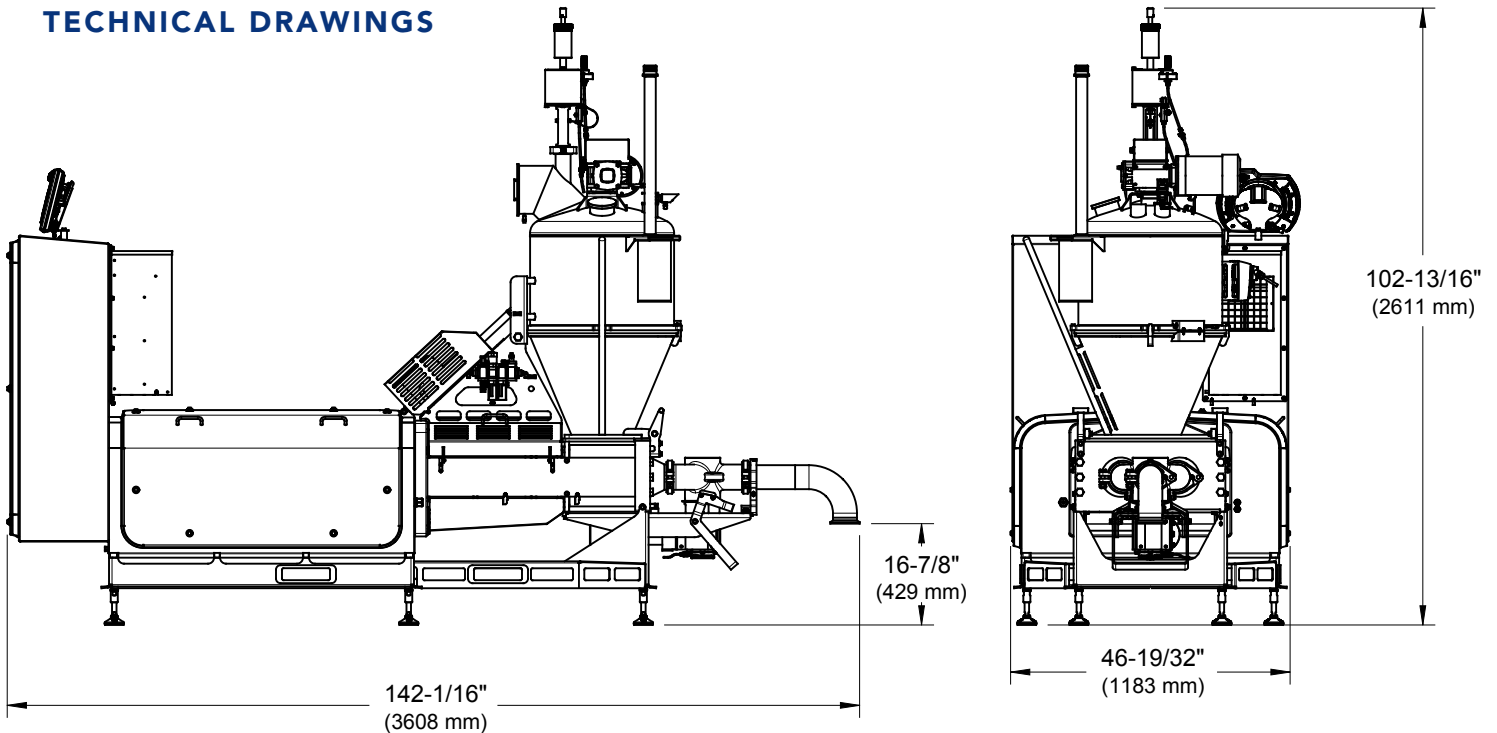
## TECHNICAL SPECIFICATIONS

MODEL	PISTON DIAMETER	PISTON STROKE	MAXIMUM CAPACITY (WT.)	MAXIMUM CAPACITY (VOL.)	PRODUCT OUTLET	MAX PRODUCT PRESSURE	MACHINE WEIGHT
OPTISERV 340	8-9/16" 217 mm	14" 355 mm	34,000 lbs/hr 15,422 kg/hr	68 gpm 257 lpm	4" 102 mm	125 psi 8.5 BAR	3,565 lbs 1,617 kg

## UTILITY REQUIREMENTS

MODEL	PUMP UTILITIES	AIR REQUIREMENTS
OPTISERV 340	60 V 60 Amp 3ph, 50 Kw	3 CFM at 100psi

## TECHNICAL DRAWINGS



4780 NW 41ST ST, STE. 100 • RIVERSIDE, MO 64150

TEL 913.888.3333 | TOLL FREE 800.862.7536 | FAX 913.888.6440 | EMAIL: SALES@MARLEN.COM | WWW.MARLEN.COM



MARLEN INTERNATIONAL IS A MEMBER OF THE **DURAVANT** FAMILY OF COMPANIES

FOOD PROCESSING SOLUTIONS | PACKAGING SOLUTIONS | MATERIAL HANDLING SOLUTIONS | SUPPORTPRO

[www.duravant.com](http://www.duravant.com)