

# VOLUMETRIC

PORTION  
FILLER

SOLUTIONS



Accurate, Labor-saving,  
and Robust Filling



**MARLEN**  
A DURAVANT COMPANY

# SLIDE-FILL PORTION FILLING TECHNOLOGY

**M**arlen's slide-fill technology enables the gathering of hot or cold, moist irregular-sized products for consistent filling into a broad variety of packaging formats. Volumetric filling delivers accurate weights, dramatically reducing product giveaway. This technology is known for handling tough applications that are often referred to as "hand fill" products such as shredded meats, flaked fish, naturally fermented veggies, chewing tobacco, shredded surimi, par-cooked diced chicken, and more.

Our 1-, 4-, and 6-PAK models can be designed to seamlessly integrate with horizontal form/fill/seal, pouch sealers (both simplex and duplex), cans and glass jars, and preformed trays. Marlen fillers can be adapted to single- or multi-lane and vertical packaging formats.

Our PAK series fillers offer minimal fines with little product damage, preserving product integrity and appearance in the package. Reduce labor costs associated with hand filling, and shift manpower to other areas.

## ADVANTAGES OF MARLEN VOLUMETRIC FILLERS

### **Laborsaving, accurate, and repeatable, day after day.**

- Fill weight accuracy capable of one standard deviation =  $\pm 2\%$  target fill weight
- Accurate product depositing into various packaging formats; form/fill/seal pockets, glass jars, preformed pouches or trays. Reduces seal contamination.
- Fill weights can be easily adjusted to maintain a narrow window of finished package fill weights.

### **Quick product changeover and hygienic, safe design.**

- Marlen fillers can be supplied with a dual-purpose storage/cleaning cart. All change parts that are to be removed for daily sanitation can be safely stored on the same cart for sanitation.
- The entire machine is constructed of type 304 stainless steel and UHMW plastics. No welded tubular framework and no lamination points in its open channel frame.
- Guarding protects operators from hazardous motion
- Regardless of varying containers or portion sizes, our slide-fill equipment is designed for quick product changeovers and can be easily adjusted for product portion shape, height, or weight.
- Icon-based, user-friendly, highly intuitive HMI







# « DIRECTION OF TRAVEL »

2TRACK/2ROW

ROW1

ROW2



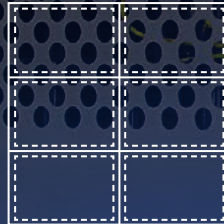
TRACK1

TRACK2

3TRACK/2ROW

ROW1

ROW2



TRACK1

TRACK2

TRACK3

4TRACK/2ROW

ROW1

ROW2



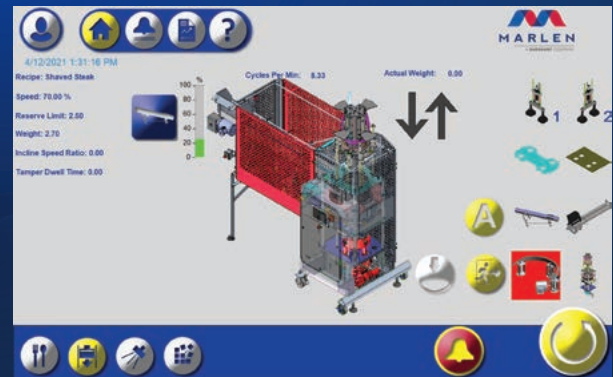
TRACK1

TRACK2

TRACK3

TRACK4

## FLEXIBLE DESIGN FOR FORM/FILL/SEAL FORMATS



## ICON-BASED, USER-FRIENDLY HMI

# TECHNICAL DIAGRAMS

## FILLER APPLICATIONS:

PRODUCT	PRODUCT STATE	PRODUCT	PRODUCT STATE
Artichoke Hearts	Fresh or cooked	Kimchi	Various vegetables
Bacon	Bits	Ham	Diced, cooked
Beef Stew Ingredients	Diced, cooked / raw	Pasta	Cooked
Beef / Pork	Diced or strips, cooked / raw / IQF	Philly Cheesesteak	Sliced cooked beef with peppers / onions
Chicken	Diced or strips, cooked / raw / IQF	Rice	Cooked
Collard Greens / Spinach	Cooked or blanched	Salad Varieties	Pasta salad, carrot salad, beet root <i>(all with small amount of sauce)</i>
Corned Beef	Shredded or minced	Salmon	Chunked, cooked / raw
Couscous / Tabbouleh	Cooked	Tobacco	Snuff
Herring	Chunked, cooked / raw	Tuna	Chunked or flaked, cooked

## CAPACITIES:

MODEL	QTY FILL STATIONS	MAXIMUM PORTION SIZE	MAXIMUM PORTION HEIGHT	MAXIMUM PORTION WEIGHT
1-PAK	1	5.875" (149 mm)	8" (203 mm)	5 lbs. (2.3 kg)
4-PAK	4	4.8" x 5.8" (121 mm x 147 mm)	5" (127 mm)	3 lbs. (1.3 kg)
6-PAK	6	3.875" (98.4 mm)	5" (127 mm)	1.5 lbs. (.68 kg)



4780 NW 41ST ST, STE. 100 • RIVERSIDE, MO 64150

TEL 913.888.3333 | TOLL FREE 800.862.7536 | FAX 913.888.6440 | EMAIL: SALES@MARLEN.COM | WWW.MARLEN.COM



MARLEN INTERNATIONAL IS A MEMBER OF THE **DURAVANT** FAMILY OF COMPANIES

FOOD PROCESSING SOLUTIONS | PACKAGING SOLUTIONS | MATERIAL HANDLING SOLUTIONS | SUPPORTPRO

[www.duravant.com](http://www.duravant.com)